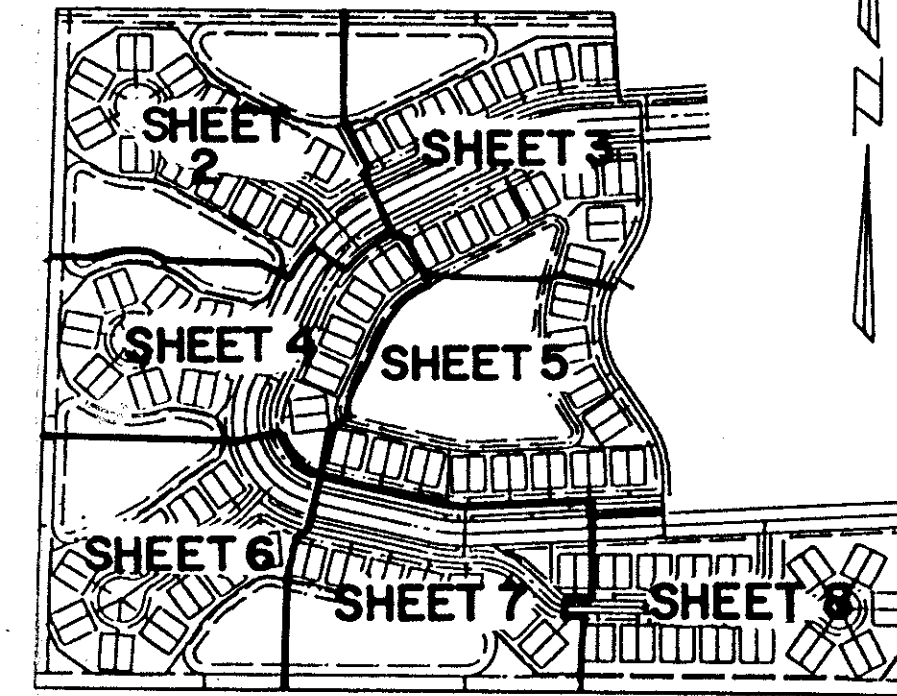


EMERALD POINTE PLAT NO. 2

A PART OF A PLANNED UNIT DEVELOPMENT
 LYING IN SECTION 16, TOWNSHIP 46 SOUTH, RANGE 42 EAST
 PALM BEACH COUNTY, FLORIDA.
 SHEET 5 OF 8 FEBRUARY, 1990.

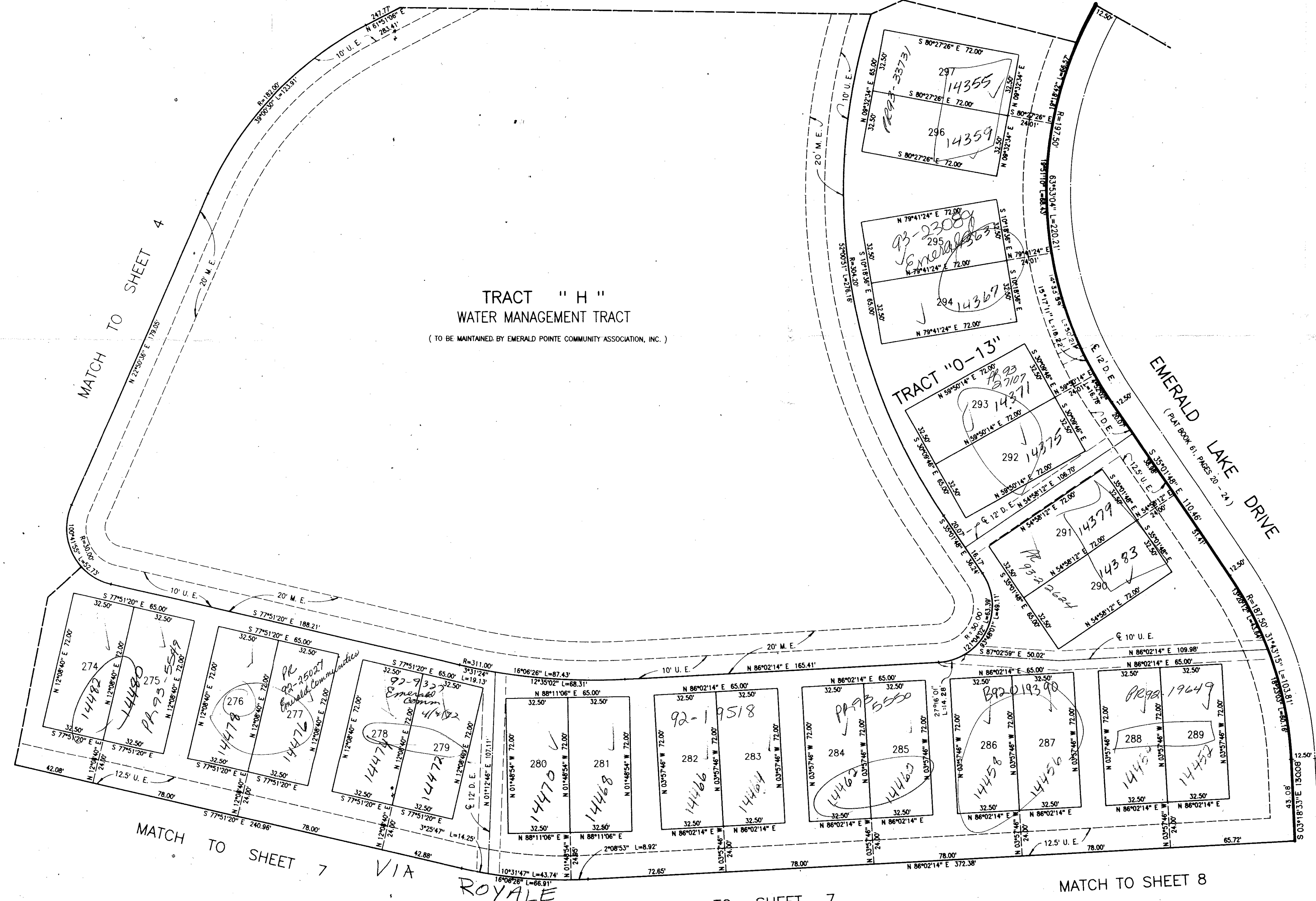
52



STATE OF FLORIDA
 COUNTY OF PALM BEACH
 This Plat was filed for record at _____
 M. this _____ day of _____ 19____
 and duly recorded in Plat Book No. _____
 on Page _____
 John B. Dunkle, Clerk of the Circuit Court
 By _____ D.C.

KEY MAP

MATCH TO SHEET 3



MATCH TO SHEET 4

TRACT "H"
 WATER MANAGEMENT TRACT
 (TO BE MAINTAINED BY EMERALD POINTE COMMUNITY ASSOCIATION, INC.)

TRACT "O-13"

EMERALD LAKE DRIVE
 (PLAT BOOK 61, PAGES 20 - 24)

MATCH TO SHEET 7 VIA ROYALE

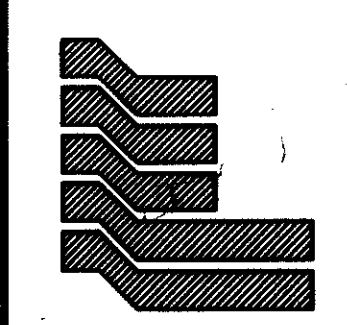
MATCH TO SHEET 7

MATCH TO SHEET 8

Pet. 84-119
 0440-002
 GRAPHIC SCALE 1"=30'

ADD. BY *BJT*
 CHECKED BY *[Signature]*

65/52



Landmark Surveying & Mapping Inc.
 1850 FOREST HILL BOULEVARD
 PH. (407)433-5405 SUITE 100 W.P.B. FLORIDA

EMERALD POINTE PLAT NO. 2

EMERALD POINTE PLAT NO. 2
 PAGE 52
 PLAT BOOK 65
 84-119

712 467